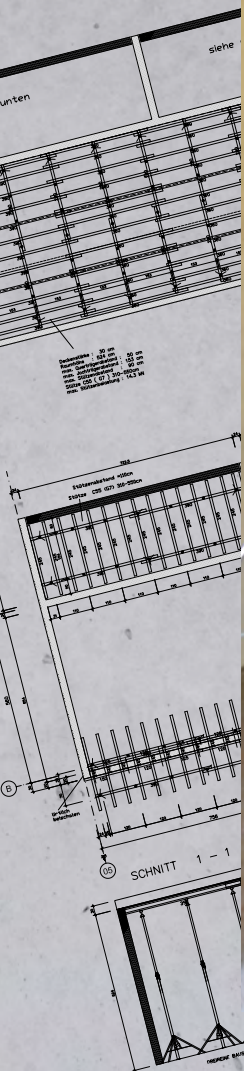


Slab props

PRODUCT INFORMATION



Slab props

Load bearing for all situations

The hot-dip galvanised and robust PASCHAL slab props are used for slab formwork, trench supports, ramps, as support for floor panel formwork or other supports.

Benefits

- High resilience thanks to a load capacity of up to 35 kN – as per DIN EN 1065
- Height can be easily adjusted via pegging holes
- Extremely robust thanks to hot-dip galvanisation
- With failover and transverse securing
- Various attachments and accessories available for individual use

All slab props are infinitely height-adjustable. The internal tube is very easy to pull along the outer tube and can be set to the desired length using G hooks and pegging holes. Adjustments down to the last millimetre can be made to achieve the exact height using the adjusting nut.

These can be delivered in a number of different extendable sizes and classes:

Slab prop D15

Extension length: 96 - 150 cm

Slab prop B/D30

Extension length: 175 - 300 cm

Slab prop C/D40

Extension length: 230 - 400 cm

Slab prop B/D25

Extension length: 155 - 250 cm

Slab prop B/D35

Extension length: 200 - 350 cm

Slab prop D55

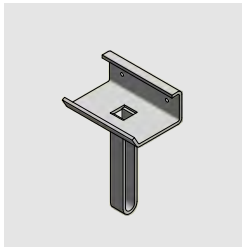
Extension length: 310 - 550 cm



Accessories

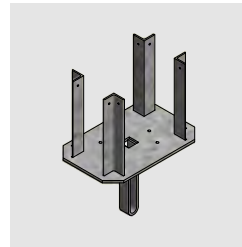
For use with PASCHAL slab formwork

Various accessories are available in the PASCHAL product range for the safe construction of slab formwork, such as our PASCHAL Deck system.



*Prop head for wooden girder H20
N183.001.0002*

For fixing the intermediate props to the wooden girder without nailing.



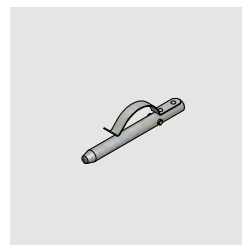
*Fork head for wooden girder H20
N940.031.0001*

Tilt-proof mounting of one or two wooden girders.



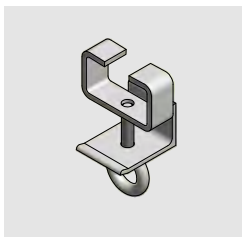
*Tripod for slab prop up to D55
N940.031.0003*

Prevents the slab props from falling over or tilting. Can be used with all common slab props.



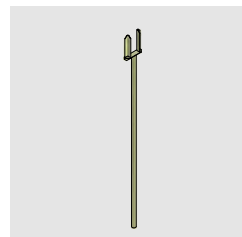
*Spring bolt 14x145 with stop
N940.031.0004*

Prevents the prop head and the fork head from slipping out of the slab prop.



*Connecting piece wooden girder
H20/H20
N183.001.0003*

Allows quick and easy connection of yoke and transverse beams.



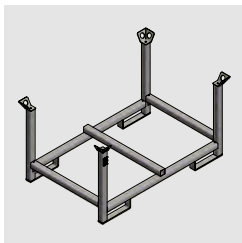
*Forked assembly tool for wooden
girder H20
N183.001.0001*

For easy and safe installation and removal of wooden girders in slab formwork.

Accessories

Transportation and storage

Up to 50 slab props can be stacked on top of each other and transported on the stacking pallets. The lattice box pallet is suitable for the safe transport of accessories.



*Stacking pallet 165x110cm
N189.002.0004*

Stacking pallet pallets with integrated lifting lugs and forklift pockets.
Admissible capacity: 1,500 kg



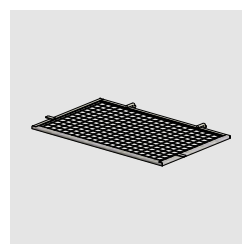
*PASCHAL lattice box pallet small
120x81x46cm (crane-liftable)
N940.009.0018*

Handling material for formwork accessories.
Admissible capacity: 1,500 kg



*PASCHAL lattice box pallet
120x81x93cm (crane-liftable)
N940.009.0017*

Thanks to the folding function, up to 25 tripods can be stacked together in a lattice box pallet.
Admissible capacity: 1,500 kg



*Cover for lattice/transportation box
1100x680x35mm
N940.009.0019*

Protects the stored parts from falling out during transport.

