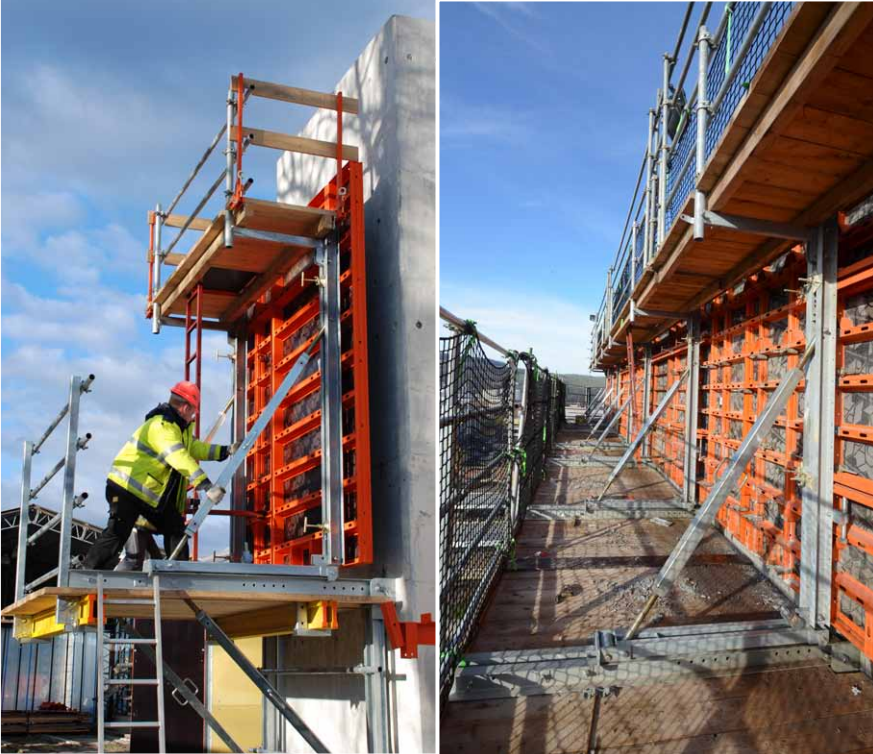


# Climbing

Product Information



Service in Formwork + Shoring

# Climbing



PASCHAL offers sophisticated flexible climbing brackets that adapt perfectly to more specific construction settings – with positive potential in flexibility and time saving. The climbing brackets can be combined with all PASCHAL formwork systems.

## Climbing System 240

It supports the efficiency and cost effectiveness of climbing systems in adjusting flexibly to the structure geometry and in permitting larger formwork units.

Bracket depth: 2,40 m; Live loads: Working platform: 4,5 / 3,0 kN/m<sup>2</sup>; Concrete platform: 1,5 kN/m<sup>2</sup>; Suspended scaffold: 1,0 kN/m<sup>2</sup>; Inclination: + / - 15°



## Climbing system 200

A versatile system for safe and economical climbing. The climbing units consist of rigid or slidable climbing brackets, adjustable props for supporting the formwork, boards, railing and possibly suspended scaffolds.

Bracket depth: 2,00 m; Live loads: Working platform: 3,0 kN/m<sup>2</sup>; Suspended scaffold: 1,0 kN/m<sup>2</sup>



## Climbing platform KBK 180

The climbing platform KBK, folding is a working and climbing scaffold which is supplied to the building site ready assembled.

Bracket depth: 1,80 m; Live loads: Working platform: 3,0 kN/m<sup>2</sup>; Suspended scaffold: 1,0 kN/m<sup>2</sup>



## Dam bracket SPK 270

PASCHAL Dam bracket is used wherever single-sided climbing is required, for example for reservoir dams, port and harbour constructions, lock-up constructions in inner city projects and refurbishment measures.

The formwork panels can be tilted in fully variable positions on the dam brackets in both directions.



## Lifting platforms

Lifting platforms are used as working platforms and for raising and moving inside formwork for elevator shafts and staircase cores as well as other structures where normal climbing units cannot be used because of the lack of space.

Max. span of the beams: 5,00 m; Max. spacing between beams: 1,70 m; Max. load on the beams: 2 kN/m<sup>2</sup> + dead weight of the formwork, 3 kN/m<sup>2</sup> without formwork

**NEW**

General Construction Supervisory Approval (called abZ)  
Climbing Cone M30/DW15

By obtaining the General Technical Approval for the PASCHAL Climbing Cone M30/DW15 a standardized system to anchor climbing brackets is available for all PASCHAL climbing and platform systems.

Hereby the PASCHAL Climbing system 240, the Climbing system 200, the Climbing platform KBK, Dam bracket and the Lifting platform for shafts can be dimensioned by secured parameters.



Climbing cone M30/DW15  
One anchor for all PASCHAL climbing systems.